

Feast of fairy-tales comes together in the Into The Woods musical

THE Yeovil Amateur Operatic Society put on a fairy-tale of a show at its new location of the Westlands Yeovil entertainment venue.

With the Octagon Theatre currently out of action, YAOS moved to Westlands where it was faced with a number of new challenges.

But YAOS adapted well and once again put on a fabulous show for audience during the production run from October 18-21.

Into the Woods is a musical written by Stephen Sondheim and intermingles a number of well-known fairy tales together into one story and then continues them to an unforeseen end.

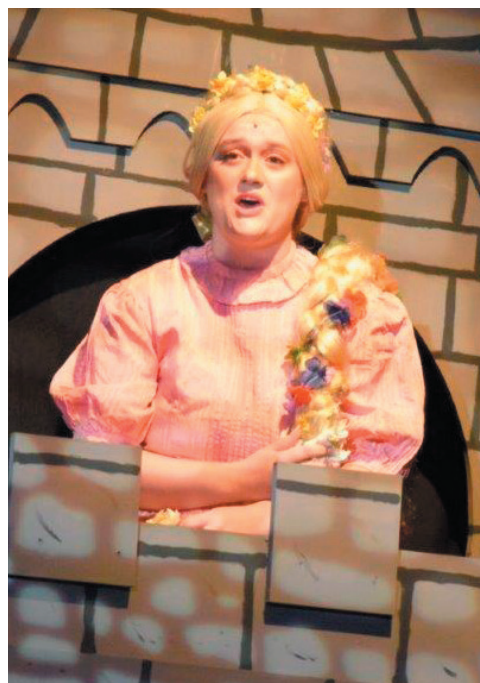
With Westlands Yeovil venue not the same as the Octagon Theatre, YAOS had to adapt accordingly with a smaller stage and the reduced theatre facilities, but the members put on another great show as they intertwined the stories of Little Red Riding Hood, Jack and the Beanstalk, Rapunzel, Cinderella and several others.

PHOTOS: Yeovil Press.

THE CAST: Narrator, Luke Whitchurch; The Baker, Matt Thompson-Burrows; The Baker's Wife, Charlie Wood; The Witch, Sarah Westaway; Jack's Mother, Jennifer Holland-Brewer; Jack, Matt Parker; Giant, Sleeping Beauty and Swing, Jodie Glover; Little Red Riding Hood, Izzy Macgregor; Granny, Emily Wilson; The Wolf, Jay Westaway; Cinderella, Leah Driver; Florinda, Charmayne Hooper; Lucinda, Lucy Speke; Cinderella's Stepmother, Maureen Wycherley; Cinderella's Mother, Naomi Lawton; Cinderella's Father,

Michael Francis; Cinderella's Prince, Seb Watts; Rapunzel, Hannah Long; Rapunzel's Prince, Harrison Waterhouse; The Mysterious Man, Duncan Wright; Steward, Nick Toop; Milky White, Lucy Capes; Snow White and Swing, Amelia Meldrum.

PRODUCTION TEAM: Director, Tash Moore; Assistant Director, Sheila Driver; Musical Director, Matt Holman-Holmes; Stage Director, Sarah Lowery; Stage Management, Marc Batterbury and Andrew MacLauchlan; Set Design, Marc Batterbury; Construction Team, Nik Dolman, Matt Parker and Marc Batterbury and assisted by Liz Stallard, Mark Rudd, Jean Rudd, Geoff Thresh, Elisha Hooper, Charmayne Hooper, Seb Watts, Lucy Capes, Lynne Crane, Bob Crane, Ade Morris, Jack Ayres, Helen Butcher, Peter Butcher, Gary Allen, Di Jameson, Nick Riva; Scenic Artist, Kate Chidley; Stage Crew, Nik Dolman, Matt Parker, Vicki Hallet, Mike Toop, Ade Morris, Lucy Kneller, Sam Kneller-Hole, Helen Butcher, Peter Butcher, Stuart Bissett, Nick Riva; Props Supervisors, Pauline Warren, Sharon Hansford, Christine Musgrave, Mary Nichols, Sue Burgess, Pauline Withers, Ruth Lodge; Costume Supervisors, Beth Harris and Stephy Bussell; Hair and Make-up, Amanda Lowder. Milky White Makers, Alex Gartshore and John Whitchurch; Rehearsal Prompt, Lauren Francis; Lighting Design, Danny Norris; Lighting Technicians, Technicians of the Octagon Theatre; Sound, David Riley – Northern Lights Productions.





YAOS Productions Presents
RODGERS & HAMMERSTEIN'S
OKLAHOMA!
 Music by: **RICHARD RODGERS** Book & Lyrics by: **OSCAR HAMMERSTEIN II**
 Based on the play *Green Grow the Lilacs* by: **LYNN RIGGS** Original Dances by: **AGNES DE MILLE**
19th-23rd MARCH 2024
 Westlands Entertainment Venue, Yeovil

Director & Choreographer: **SHEILA DRIVER**
 Musical Director: **JESSAMY BOWDITCH**

This amateur production of OKLAHOMA! is presented by arrangement with Concord Theatricals Ltd. on behalf of The Rodgers & Hammerstein Organization. www.concordtheatricals.co.uk

[f](https://www.facebook.com/yaos.org) [i](https://www.instagram.com/yaos.org)
www.yaos.org



YEOVIL AMATEUR OPERATIC SOCIETY- INTO THE WOODS - OCTOBER 18-21, 2023



READ & Co. CHARTERED ACCOUNTANTS

1 Park Gardens
YEOVIL
Somerset
BA20 1DW
01935 412561

www.readaccountants.co.uk

- Support & compliance services for small and medium sized businesses
- VAT planning & administration
- PAYE for business
- Consultancy and systems advice
- Personal taxation services including Inheritance Tax and Capital Gains Tax planning
- Cloud-based accounting services
- Making Tax Digital specialists

Please get in touch for a **FREE** no obligation consultation and a cup of coffee or other beverage of your choice. Biscuits are subject to availability...

Pleased to support our friends in YAOS and this production of Into The Woods.

David Hallett FCA FCCA
david@readaccountants.co.uk